



WALLTITE[®]

The airtight insulation solution

New timber frame wall insulation

Data sheet 3.1

 **BASF**

We create chemistry

New timber frame wall insulation Data sheet 3.1

Description

WALLTITE is applied directly between the studs onto the OSB. The stud depth should be sufficient to meet the recommended elemental U-value.

Unwanted air leakage and air infiltration is minimised and sound attenuation improved.

Polyurethane foams are hypo allergenic and so contain no fibres or dust and no noxious vapours. Mechanical and electrical services can be fixed between the foam and the plasterboard. WALLTITE is very quick to install minimising on overhead costs, site storage and waste.

Certification

BBA Certificate No. 11/4816.

WALLTITE has undergone various performance tests. Certificates are available on request.



Technical data

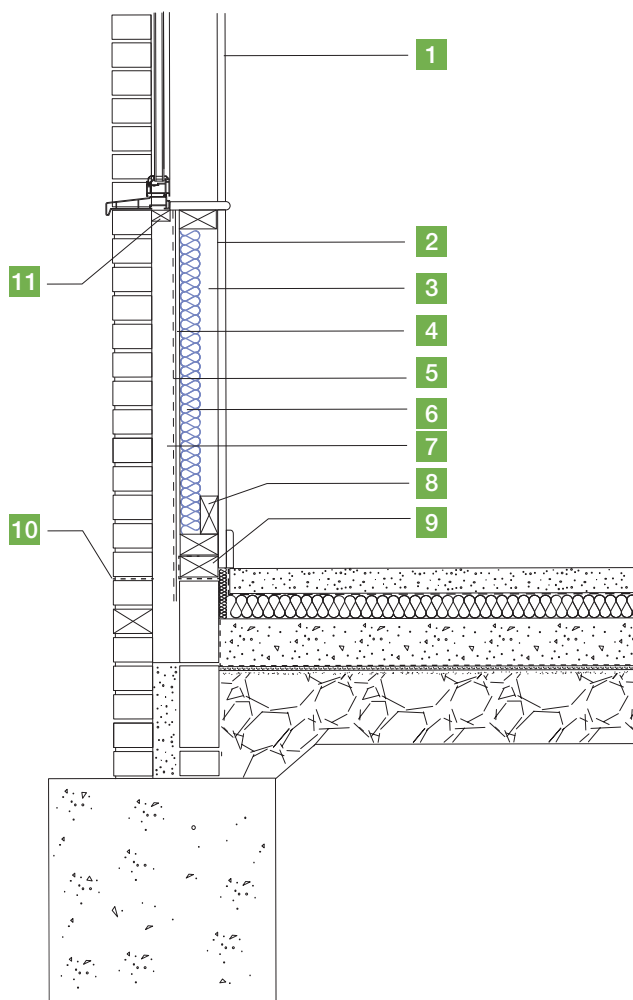
Specification	Insulation sprayed between studwork
NBS clause	P10 205A
Lambda 90/90	0.025 to 0.028W/mK
Fire rating	Class 1 to BS 476 Part 7
Adhesion to timber	136kPa

U-values

Thickness of WALLTITE (mm)	U-value (W/m ² K)
135	0.20
100	0.25
90	0.27

Typical detail:

New timber frame wall



1. Plasterboard and skim
2. Vapour control layer to be lapped over DPC at floor level and returned to window reveal and jambs
3. Unventilated air space
4. Sheathing ply
5. Breather membrane
6. WALLTITE CL100 insulation to achieve target U-value
7. 50mm air gap
8. Noggin to support plasterboard
9. Sill plate
10. DPC
11. Treated timber cill support fixed to timber frame, clad and protected in DPC with insulation set above

Allow for differential movement at ALL openings, i.e. at window cill and window heads, as recommended by the timber frame manufacturer/UKTFA/TRADA: to accommodate differential movement and provide weather resistant and durable joint.



WALLTITE®